

Creating a Retro Apple “disk][“ Floppy Disk Sleeve

Dr. Kenneth Buchholz | Apple2Online.com

Creating a retro 5.25” floppy disk sleeve with the original Apple “disk][“ logo is relatively easy! I am providing a PDF with a master template that you can print on your inkjet printer, cut, fold and paste.

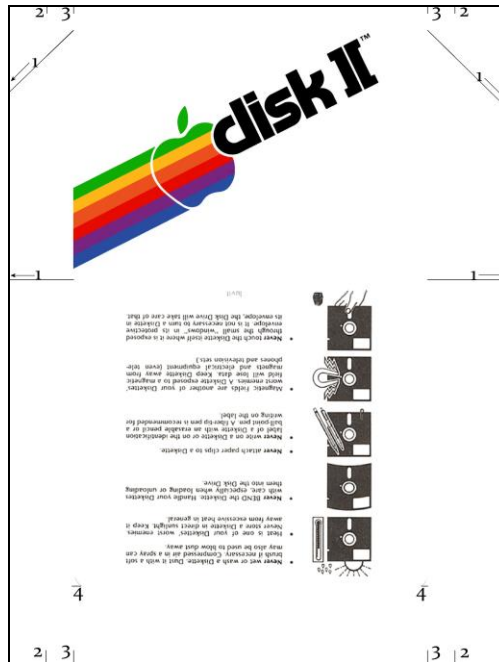
First things first. I searched the web for disk sleeve templates, and found many. Problem was that the templates, when downloaded & printed, did not print the size correctly. I found one template from “Luvit at sub-16bit” and used this as my starting point. Luvit’s template (1) needed to be adjusted to print the size correctly, (2) printed lines that showed up upon completion of the disk sleeve, and (3) the disk][logo was blurry. So I set about to correct these problems. I replaced Luvit’s blurry logo with a high definition logo I created a while back, and I removed all lines so that the printed product shows no guide lines. And of course, I adjusted the template so that the product size printed correctly.

Before printing, realize that printers will reduce slightly the size of an image. I suggest that you print the template in borderless mode on your printer. In the event that your printer only allows borderless mode with images (vs PDFs), I am providing the template in both PDF and JPG formats.

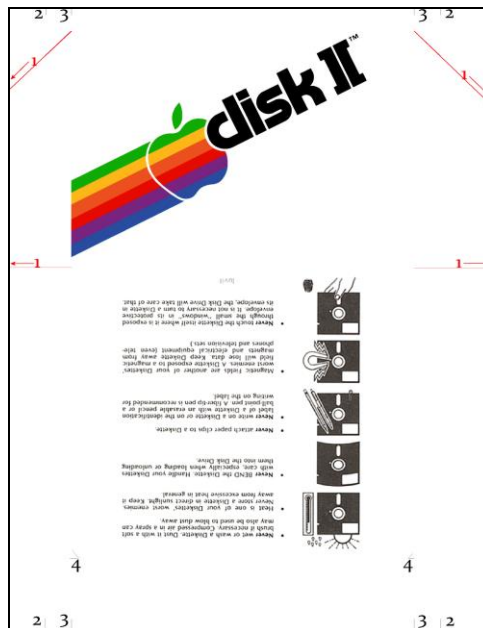
Instructions

Step 1. Print the master template.

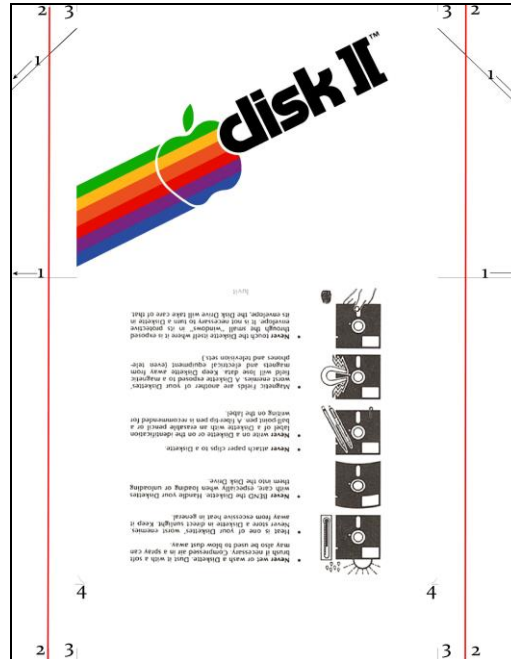
Step 2. The printed master template will look like this:



Step 3. Using an Xacto-type knife and straight-edge (preferably metal), make 4 cuts along the lines marked “1”, in the direction of the arrows, as shown below:



Step 4. Next, align your straight edge with the marks on the right top and right bottom labeled “2” and make a cut along the entire length. Repeat on the left side.



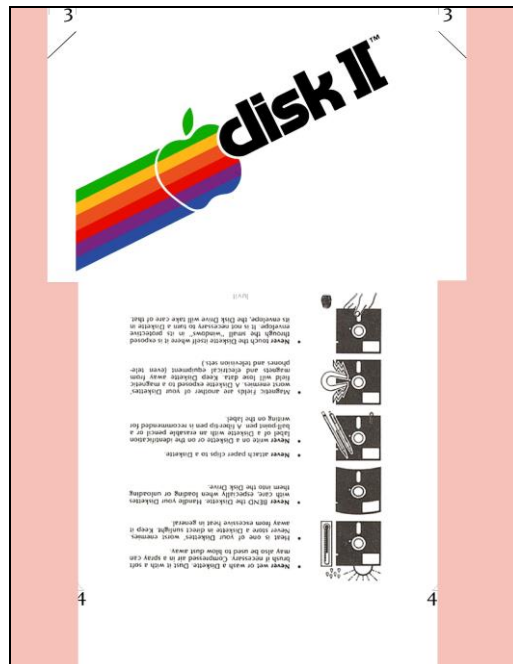
Your template should now look like this:



Step 5. Align your straight edge with the marks on the right top and right bottom labeled “3” and make a cut from the horizontal cut made in Step 3 to the bottom of the sheet. Repeat on the left side.



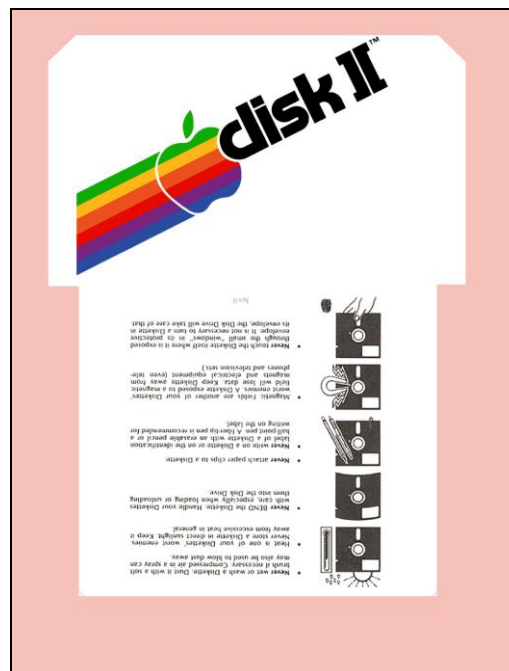
Your template sheet should now look like this:



Step 6. First, align your straight edge with the marks labeled “4” on the bottom of the sheet and cut across the entire width of the sheet.



Next, align the straight edge with the tops of the diagonal cuts made in Step 3 and cut across the entire sheet. Your master sheet should now look like this:



Step 7. Fold the bottom half behind the top half:



Snip the back corners at 45°

Note that you should not see the writing on the back. The grayed out writing in the above graphic is just for illustration purposes.

Step 8. Fold each side back and affix with paper paste. **Allow the paste to completely dry before using!**

Your finished product should look like this:

